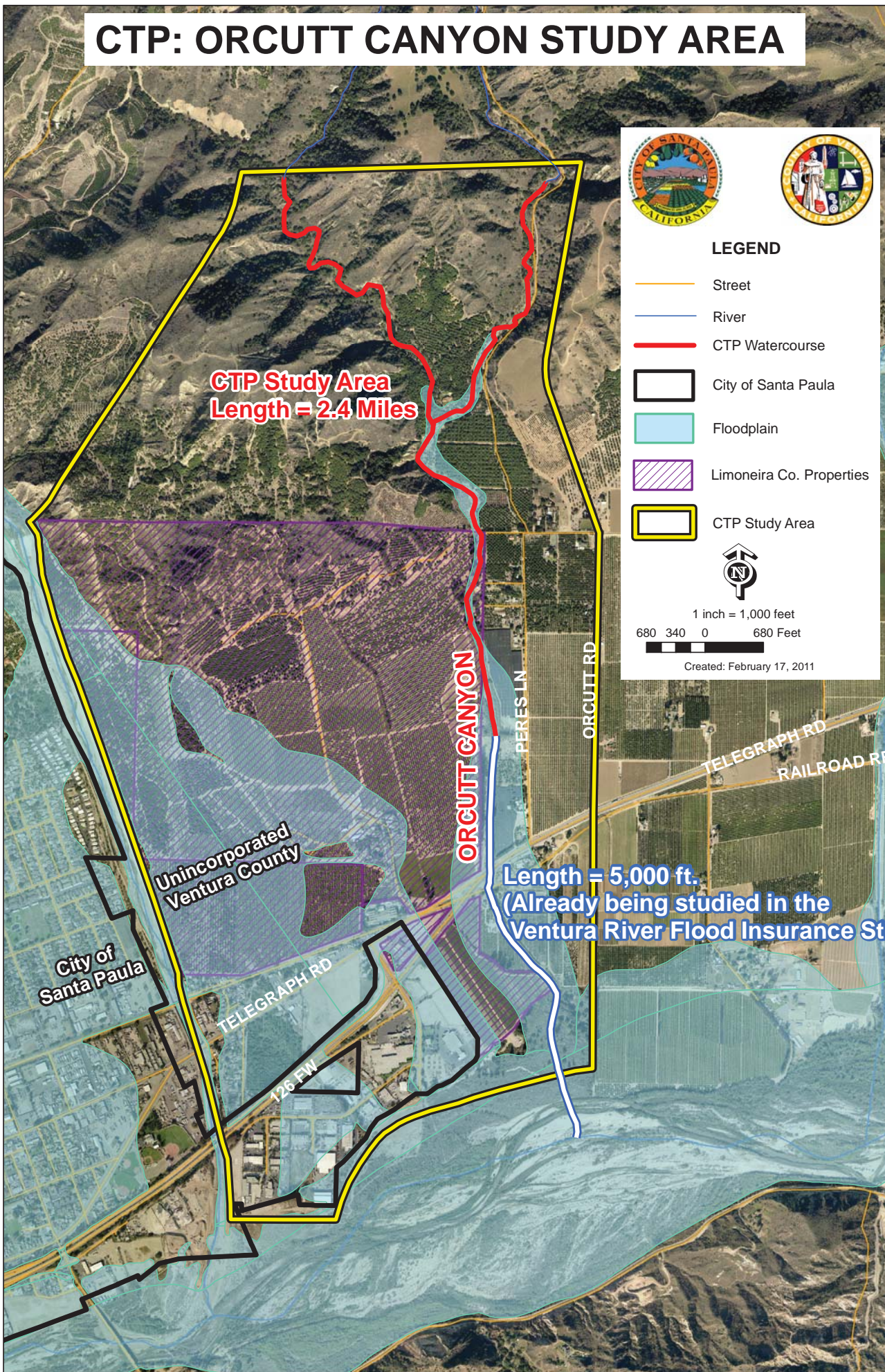


CTP: ORCUTT CANYON STUDY AREA



**CTP Study Area
Length = 2.4 Miles**

**Length = 5,000 ft.
(Already being studied in the
Ventura River Flood Insurance Study)**

LEGEND

- Street
- River
- CTP Watercourse
- City of Santa Paula
- Floodplain
- Limoneira Co. Properties
- CTP Study Area

1 inch = 1,000 feet
680 340 0 680 Feet
Created: February 17, 2011

City of Santa Paula

**Unincorporated
Ventura County**

ORCUTT CANYON

TELEGRAPH RD

126 FW

PERES LN

ORCUTT RD

TELEGRAPH RD

RAILROAD RD