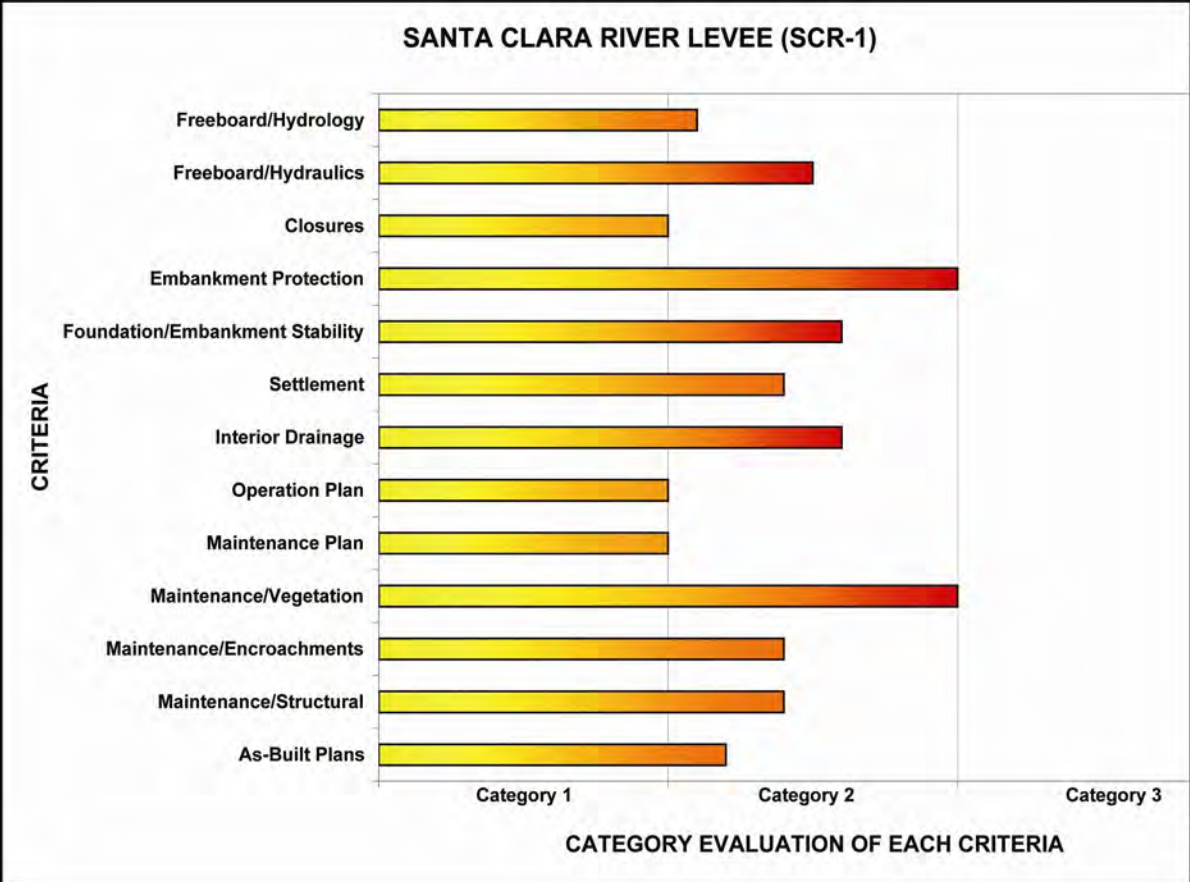
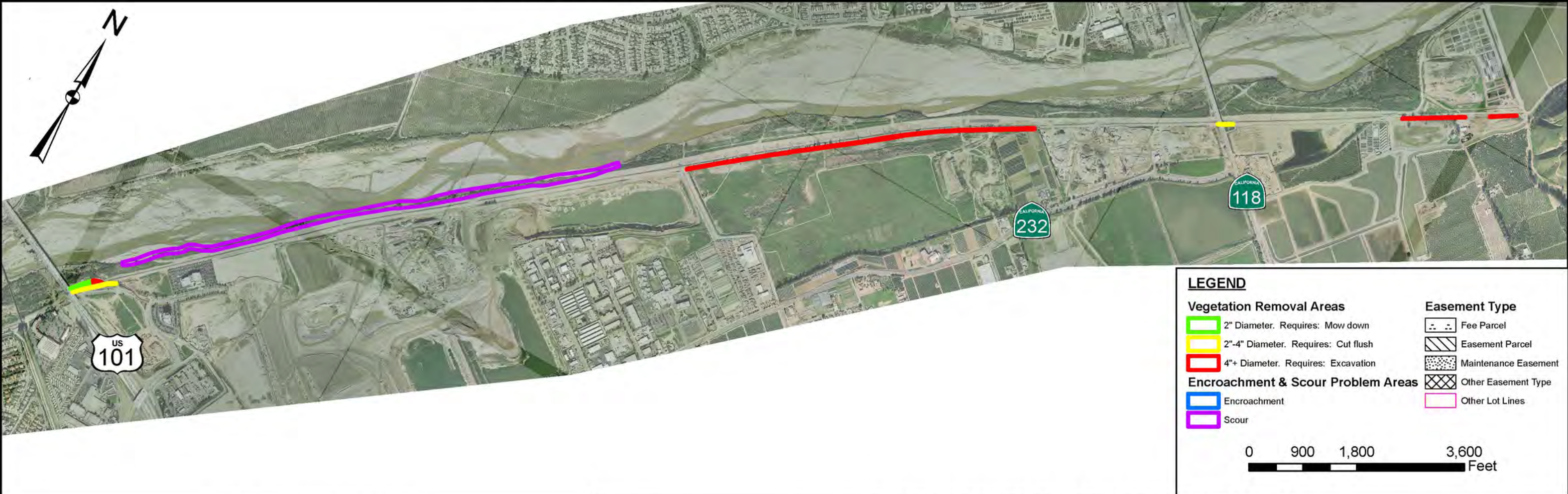


# CERTIFICATION DOCUMENTATION ACTION PLAN MAP SANTA CLARA RIVER LEVEE (SCR-1: FEMA ID 18)



### LEVEE CERTIFICATION ACTION PLAN TASK TIMELINE AND COST ESTIMATES FOR SCR-1

Task	February 13, 2009		Jan		February		March		April		May		June		July		August		September		October		November		Post-Nov.30		Cost Estimate Total
	3	4	1	2	3	4	1	2	3	4	5	1	2	3	4	1	2	3	4	1	2	3	4	1	2	3	
Vegetation Removal																										\$258,000	
Maintenance Repairs																											\$838,000
Topographic Survey Verification																											\$38,000
Hydrologic Analysis																											\$33,000
Hydraulic Analysis																											\$38,000
Interior Drainage																											\$38,000
Sediment/Scour Analysis																											\$38,000
Geotechnical Analysis																											\$210,000
Title Search/Boundary Survey																											\$60,000
Public Outreach																											\$20,000
Easement Acquisition																											\$100,000
Environmental Documents/Permits																											\$60,000
Engineering Analysis																											\$50,000
Plans, Specs & Estimate - Power Pole																											\$85,000
Construction/As-Builts																											\$50,000
O&M Manuals																											\$10,000
Levee Certification Report																											\$125,000
<b>Rough Order of Magnitude Cost:</b>																										<b>\$2,051,000</b>	

**Notes:**  
 1) Costs in this table are Rough Order of Magnitude and are based on the best available information as of the date listed in the upper left.  
 2) Costs for major rehabilitation requirements due to deficiencies found in future work are not included in this table.